

**PARCC RESULTS:
SPRING 2016
ADMINISTRATION**

**WYCKOFF BOARD OF EDUCATION
OCTOBER 24, 2016**

**PRESENTED BY
GRACE WHITE
SUPERVISOR OF CURRICULUM AND INSTRUCTION**

Measuring College
and Career
Readiness

NEW JERSEY'S STATEWIDE ASSESSMENT PROGRAM

- 2016 marks the 2nd administration of the Partnership for Assessment of Readiness for College and Careers (PARCC) and the first opportunity to compare year-to-year results as the following slides will show.
- Students took PARCC English Language Arts and Literacy Assessments (ELA/L) in grades 3 – 11.
- Students took PARCC Mathematics Assessments in grades 3 – 8 and End of Course Assessments in Algebra I, Geometry, and Algebra II.

PARCC PERFORMANCE LEVELS

- **Level 1: Not yet meeting grade-level expectations**
- **Level 2: Partially meeting grade-level expectations**
- **Level 3: Approaching grade-level expectations**
- **Level 4: Meeting grade-level expectations**
- **Level 5: Exceeding grade-level expectations**

ENGLISH LANGUAGE ARTS / LITERACY AVERAGE SCORE COMPARISON

| | NJ State 2016 | Wyckoff 2016 | Wyckoff 2015 |
|---------|---------------|--------------|--------------|
| Grade 3 | 746 | 769 | 757 |
| Grade 4 | 751 | 776 | 772 |
| Grade 5 | 751 | 774 | 775 |
| Grade 6 | 750 | 772 | 759 |
| Grade 7 | 753 | 772 | 768 |
| Grade 8 | 753 | 768 | 768 |

WYCKOFF

2016 SPRING PARCC GRADE-LEVEL OUTCOMES ENGLISH LANGUAGE ARTS/LITERACY

| | Grade 3 % >= Level 4 | Grade 4 % >= Level 4 | Grade 5 % >= Level 4 | Grade 6 % >= Level 4 | Grade 7 % >= Level 4 | Grade 8 % >= Level 4 |
|--------------------------|----------------------------|----------------------------|----------------------------|----------------------------|----------------------------|----------------------------|
| NJ State | 46 | 53 | 53 | 52 | 56 | 55 |
| Wyckoff 2016 | 70 | 82 | 84 | 82 | 74 | 74 |
| % Difference vs State | +24 | +29 | +31 | +30 | +18 | +19 |
| Wyckoff 2015 | 60 | 82 | 86 | 65 | 71 | 72 |
| % Difference vs 2015 | +10 | 0 | -2 | +17 | +3 | +2 |

MATHEMATICS AVERAGE SCORE COMPARISON

| | NJ State | Wyckoff 2016 | Wyckoff 2015 |
|-----------------|-----------------|---------------------|---------------------|
| Grade 3 | 750 | 773 | 760 |
| Grade 4 | 746 | 767 | 765 |
| Grade 5 | 747 | 766 | 761 |
| Grade 6 | 743 | 759 | 750 |
| Grade 7 | 740 | 753 | 750 |
| Grade 8 | 726 | 725 | 733 |
| Algebra | 741 | 766 | 767 |
| Geometry | 732 | 777 | 782 |

WYCKOFF
2016 SPRING PARCC SCHOOL- & GRADE-LEVEL OUTCOMES
MATHEMATICS

| | Grade 3 % >= Level 4 | Grade 4 % >= Level 4 | Grade 5 % >= Level 4 | Grade 6 % >= Level 4 | Grade 7 % >= Level 4 | Grade 8 % >= Level 4 | Algebra I % >= Level 4 | Geometry % >= Level 4 |
|----------------------------------|----------------------------|----------------------------|----------------------------|----------------------------|----------------------------|----------------------------|------------------------------|--------------------------|
| NJ State | 52 | 47 | 47 | 43 | 39 | 26 | 41 | 27 |
| Wyckoff 2016 | 83 | 78 | 78 | 70 | 60 | 23 | 74 | 91 |
| % Difference vs State | +31 | +31 | +31 | +27 | +21 | -3 | +33 | +64 |
| Wyckoff 2015 | 65 | 75 | 69 | 51 | 57 | 26 | 74 | 100 |
| % difference vs 2015 | +18 | +3 | +9 | +19 | +3 | -3 | -0 | -9 |

ELA GRADE 3 TABLE SAMPLE



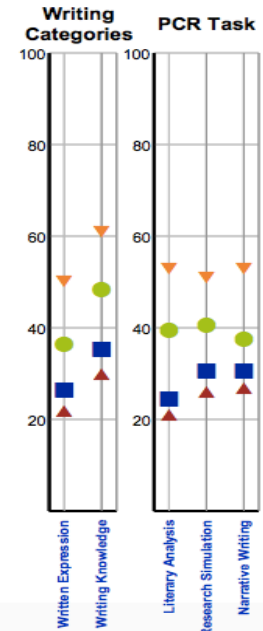
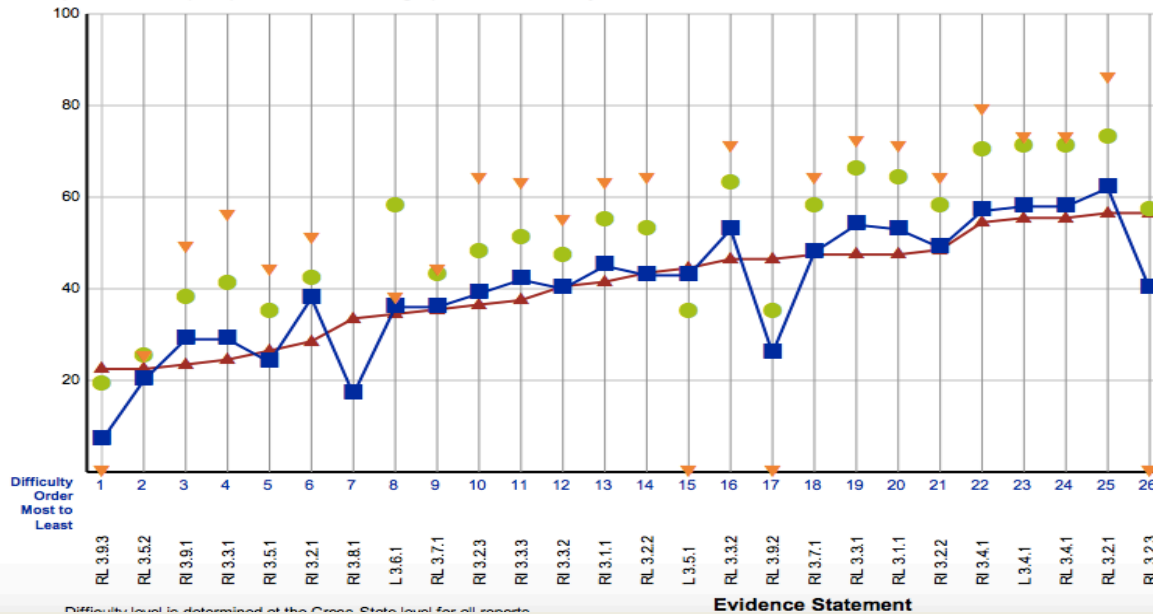
WYCKOFF TWP
NEW JERSEY

ENGLISH LANGUAGE ARTS / LITERACY Grade 3 Assessment, Spring 2016

- ▲ Cross-State
- State
- District
- ▼ School

Students with Valid Scores (51)

Purpose: This report presents the average percent correct by Evidence Statement for school, district, state and Cross-State.



MATH GRADE 5 TABLE SAMPLE

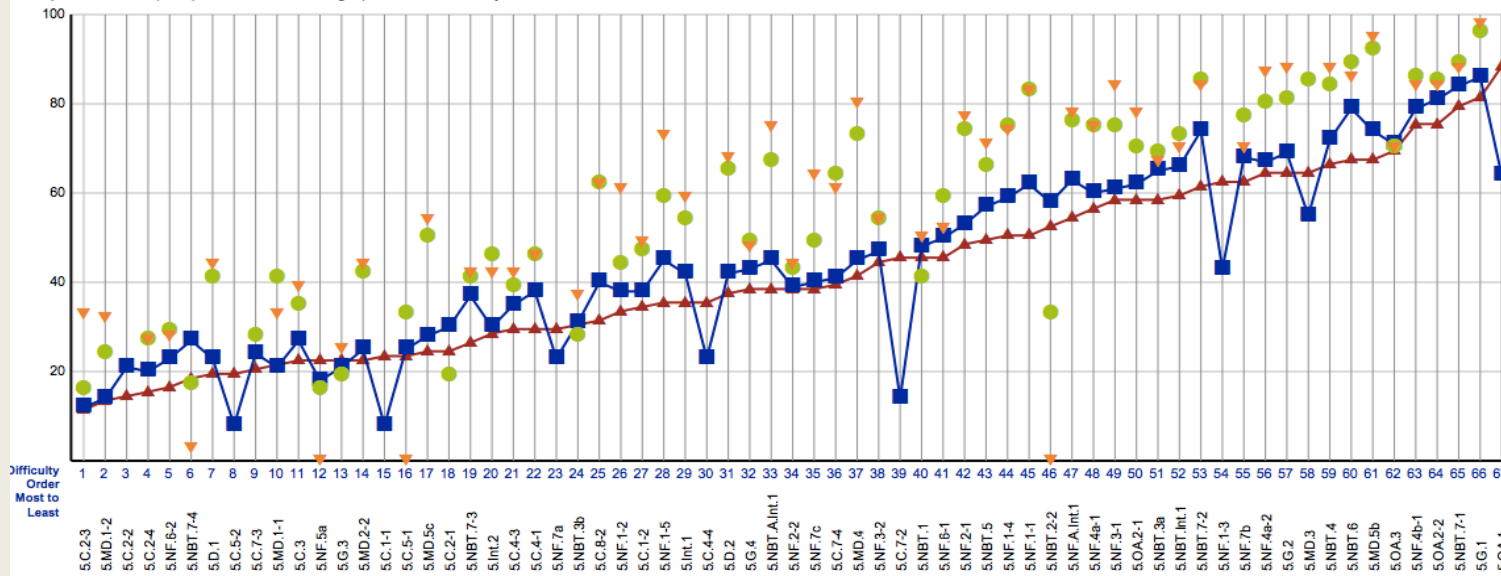
WYCKOFF TWP
NEW JERSEY

- ▲ Cross-State
- State
- District
- ▼ School

MATHEMATICS Grade 5 Assessment, Spring 2016

Students with Valid Scores (72)

Purpose: This report presents the average percent correct by Evidence Statement for school, district, state and Cross-State.



WHAT STANDARD?

Evidence Statement Analysis

Grade 3

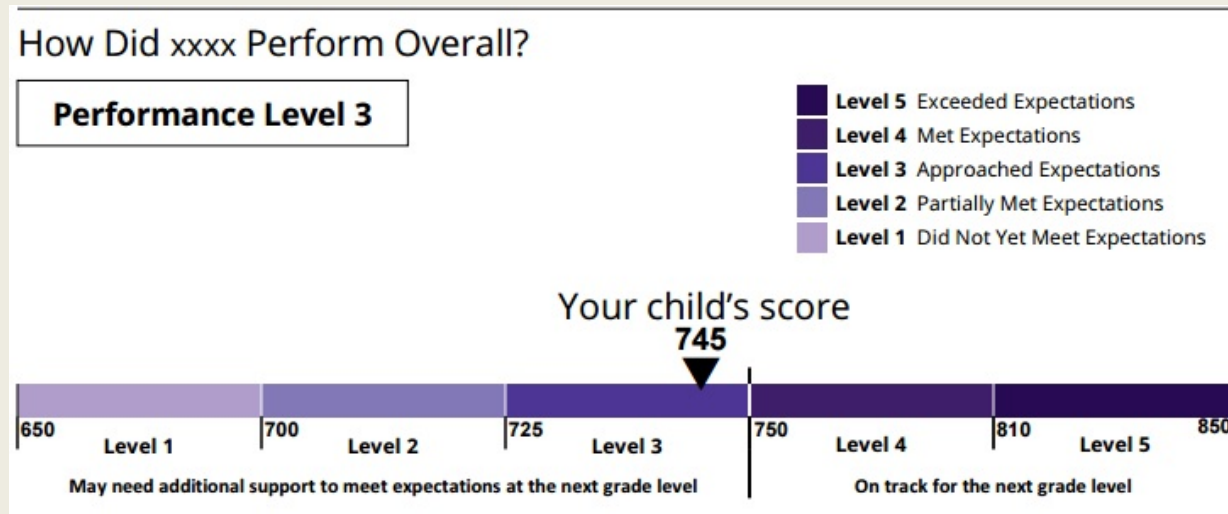
This report shows the operational Evidence Statements for the given grade and subject sorted by difficulty

ENGLISH LANGUAGE ARTS / LITERACY Grade 3 Assessment, Spring 2016

| Difficulty Order Most to Least | Evidence Statement | Common Core State Standard(s) | Domain |
|-----------------------------------|--------------------|----------------------------------|-----------------------------|
| 1 | RL 3.9.3 | RL.3.9 | Reading: Literature |
| 2 | RL 3.5.2 | RL.3.5 | Reading: Literature |
| 3 | RI 3.9.1 | RI.3.9 | Reading: Informational Text |
| 4 | RI 3.3.1 | RI.3.3 | Reading: Informational Text |
| 5 | RI 3.5.1 | RI.3.5 | Reading: Informational Text |
| 6 | RI 3.2.1 | RI.3.2 | Reading: Informational Text |
| 7 | RI 3.8.1 | RI.3.8 | Reading: Informational Text |
| 8 | L 3.6.1 | L.3.6 | Language |
| 9 | RL 3.7.1 | RL.3.7 | Reading: Literature |
| 10 | RI 3.2.3 | RI.3.2 | Reading: Informational Text |
| 11 | RI 3.3.3 | RI.3.3 | Reading: Informational Text |
| 12 | RI 3.3.2 | RI.3.3 | Reading: Informational Text |
| 13 | RI 3.1.1 | RI.3.1 | Reading: Informational Text |
| 14 | RL 3.2.2 | RL.3.2 | Reading: Literature |
| 15 | L 3.5.1 | L.3.5 | Language |
| 16 | RL 3.3.2 | RL.3.3 | Reading: Literature |
| 17 | RL 3.9.2 | RL.3.9 | Reading: Literature |
| 18 | RI 3.7.1 | RI.3.7 | Reading: Informational Text |
| 19 | RL 3.3.1 | RL.3.3 | Reading: Literature |
| 20 | RL 3.1.1 | RL.3.1 | Reading: Literature |
| 21 | RI 3.2.2 | RI.3.2 | Reading: Informational Text |
| 22 | RI 3.4.1 | RI.3.4 | Reading: Informational Text |
| 23 | L 3.4.1 | L.3.4 | Language |
| 24 | RL 3.4.1 | RL.3.4 | Reading: Literature |
| 25 | RL 3.2.1 | RL.3.2 | Reading: Literature |
| 26 | RL 3.2.3 | RL.3.2 | Reading: Literature |

RESOURCES FOR PARENTS

- Information on the new 2015-16 PARCC Student Reports: www.state.nj.us/education/assessment/parcc/scores/
- Understanding the student score reports (with translations): understandthescore.org/



Sample report